


Search Along!

- Where are **Nut** and **Shell**?
- Ten fairies are playing hide-and-seek. Can you find them?
- Look for Cuddle Fairy's plushie and Game Fairy's ball.
- Four rabbits, three roe deer, and a squirrel are enjoying spring! Can you find them?
 - Can you find the badger and fox?
 - The birds are whistling a spring song! Find the great tit and the robin.



Wild garlic blooms in large groups in early spring. You can recognize this plant because it smells like . . . onions!



Summer

"I also like summer," says **Nut**. "I love when the sun warms my fur. And if I get too hot, I just take a refreshing dive into the pond. Maybe summer is my favorite season!"

Shell giggles. "I like summer too! I don't enjoy jumping into the pond, but I love paddling from the water lily!"

Shell thinks for a moment. "Do you know what I like best about summer? There's fruit everywhere. Delicious cherries and juicy blackberries. And my favorite: woodland strawberries! Yum! You're right, **Nut**. Summer is an amazing season."

Did you know that the days are longer in summer, and the sun shines more often? Fruits ripen, and there's plenty of nectar for insects.

Summer lasts from June 21 to September 20.



The pine marten is an excellent climber who jumps from one branch to another like an acrobat. It feels right at home in the forest. During the day, the pine marten sleeps in hollow trees. At night, it goes hunting.

What does the pine marten eat? The pine marten is an omnivore and likes to eat squirrels, mice, rabbits, and hares. But it also eats eggs, insects, mushrooms, and fruits.



Trees, Plants, and Butterflies in Summer



The wild cherry is sweet. Many birds, as well as the badger, love it.



The blackberry is an animal-favorite. Birds, foxes, and wild boars enjoy these fruits. They ripen at the end of summer.

The woodland strawberry is the little sister of the common strawberry. It's deliciously sweet.

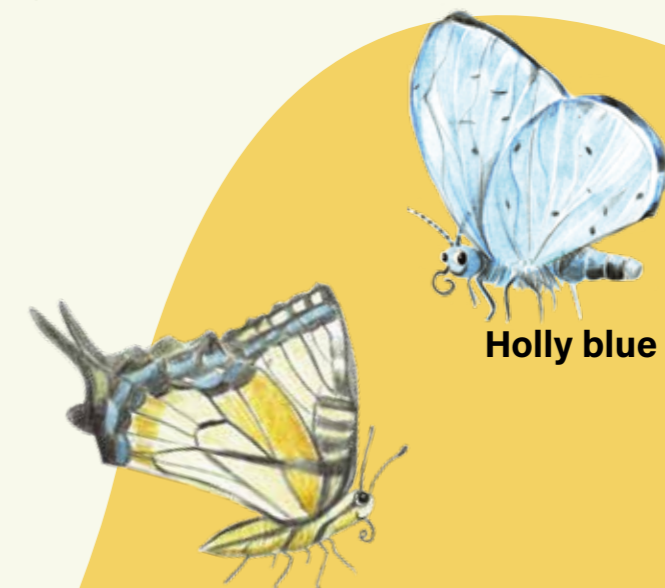


Brownray knapweed is popular among bees and bumblebees; its flowers provide a lot of nectar.

The daisy is a large flower. The heart, the inner part, is yellow. The petals are white.



The cattail is a waterside plant. It looks like a corn dog.



Swallowtail



Holly blue



Peacock butterfly

Search Along!

- Where are **Nut** and **Shell**?
- Come out, come out, wherever you are! Look for the ten fairies.
 - Look for Cuddle Fairy's plushie and Game Fairy's ball.
- Many animals are playing in the forest: three foxes, two roe deer, two badgers, and a pine marten. Can you find them?
- In the forest, four butterflies and five bees are flying around. The robin and the great tit are resting. Go find them!

