
BUSINESS INTELLIGENCE WITH POWER BI

Sylvio Rodriguez and Jo Swinnen

 **INTERSENTIA**

Antwerpen – Gent – Cambridge

Intersentia Ltd
8 Wellington Mews | Wellington Street
Cambridge | CB1 1HW | United Kingdom
Tel.: +44 1223 736 170
Email: mail@intersentia.co.uk
www.intersentia.com | www.intersentia.co.uk

Distribution for the UK and the rest of the world (incl. Eastern Europe):

NBN International
1 Deltic Avenue, Rooksley
Milton Keynes MK13 8LD
United Kingdom
Tel.: +44 1752 202 301 | Fax: +44 1752 202 331
Email: orders@nbninternational.com

Distribution for Europe:

Lefebvre Sarrut Belgium NV
Hoogstraat 139/6
1000 Brussels
Belgium
Tel.: +32 3 680 15 50 | Fax: +32 3 658 71 21
Email: mail@intersentia.be

Distribution for the USA and Canada:

Independent Publishers Group
Order Department
814 North Franklin Street
Chicago, IL60610
USA
Tel.: +1 800 888 4741 (toll free) | Fax: +1312 337 5985
Email: orders@ipgbook.com

Get your files:

<https://download.larcier-intersentia.com>

or



and enter code: PNT745

Business Intelligence with Power BI
Sylvio Rodriguez and Jo Swinnen

ISBN 978-1-83970-3287

D/2023/7849/18

NUR 163

Printed in the European Union

Responsible publisher: Paul-Etienne Pimont, Lefebvre Sarrut Belgium NV

Lay-out: Crius Group, Hulshout

Lay-out interior pages: EHBontwerp + – www.ehbontwerp.be

Cover image: Danny Juchtmans / www.dsigngraphics.be

Translated by Heidi Janssen

Language review by Alan O'Dowd

Business intelligence with Power BI is an independent publication and is neither affiliated with, nor authorized, sponsored, or approved by, Microsoft Corporation.

The authors have asserted the right under the Copyright, Designs and Patents Act 1988, to be identified as author of this work.

No part of this book may be reproduced, stored in a retrieval system, or transmitted, in any form, or by any means, without prior written permission from Intersentia, or as expressly permitted by law or under the terms agreed with the appropriate reprographic rights organisation. Enquiries concerning reproduction which may not be covered by the above should be addressed to Intersentia at the address above.

ACKNOWLEDGEMENTS

“The union of opposites, in so far as they are really complementary, always results in the most perfect harmony; and the seemingly incongruous is often the most natural.”

Stefan Zweig

Dear reader,

With this book we attempt to introduce you to the Microsoft package Power BI as business analyst, and show how data can become useful information, in the form of business intelligence dashboards. Our target group is not so much the ICT community, but rather everyone who uses analyses and reporting, at university or in a company, from production manager to financial director.

The focus is on the implementation of realistic practical cases, such as formulating company objectives and KPIs or interpreting a dashboard.

It was a big challenge, but also fun, to process these practical cases in an educational way in this handbook. Sylvio’s experience and expertise ensured that the practical cases are very recognizable and useful for businesspeople, while Jo’s educational angle enabled a step-by-step approach for anyone interested in the workings of Power BI. We are very proud of the result!

We would like to thank a few people. In the first instance, we would like to thank Inge Verbeeck and Evi Plettinckx for the valuable input and critical look at our work, which has taken this book to a higher level. Further we would like to thank Heidi Janssen for translating our book in English. It was very pleasant working together. We would also like to thank the editorial office of Intersentia as well for the quality of the end product, and a few colleagues from PXL University of Applied Sciences and Arts, who proofread the book and gave some tips to improve it.

Next, we wish to thank each other; it was a fascinating process, during which we have both learned a lot.

Finally, we both wish to thank our families, of course. Ramuna, thank you for your extra input and patience during the writing process. And Jasper, thank you for believing in me time and time again when I start a new adventure.

Enjoy reading this book,
Sylvio Rodriguez and Jo Swinnen

USER GUIDE

Dear reader,

With the book you are now holding, we will introduce you step by step to the Microsoft package Power BI Desktop. With this package, you can turn complex company data into attractive dashboards and understandable reports.

The subtitle of the book, 'Learn. Do. Experience', is also your guide. In every chapter, we start with a realistic case. Every steps of each case is built on in the same way:



Learn

Short theoretical parts provide you with insight into company processes and potential applications of the software.



Do

You practise the prepared exercises using the screenshots and online start files.



Experience

You experience the power of the software yourself, and practise the possibilities of Power BI autonomously. Solutions are available online.

The stars indicate the complexity of each chapter.



The basics of the basics. Without this information you cannot continue.



Starting level: you can build a simple report in Power BI.



More complex reports and less clean files? Bring it on!



Power BI and you, it's a match.

Get your files:

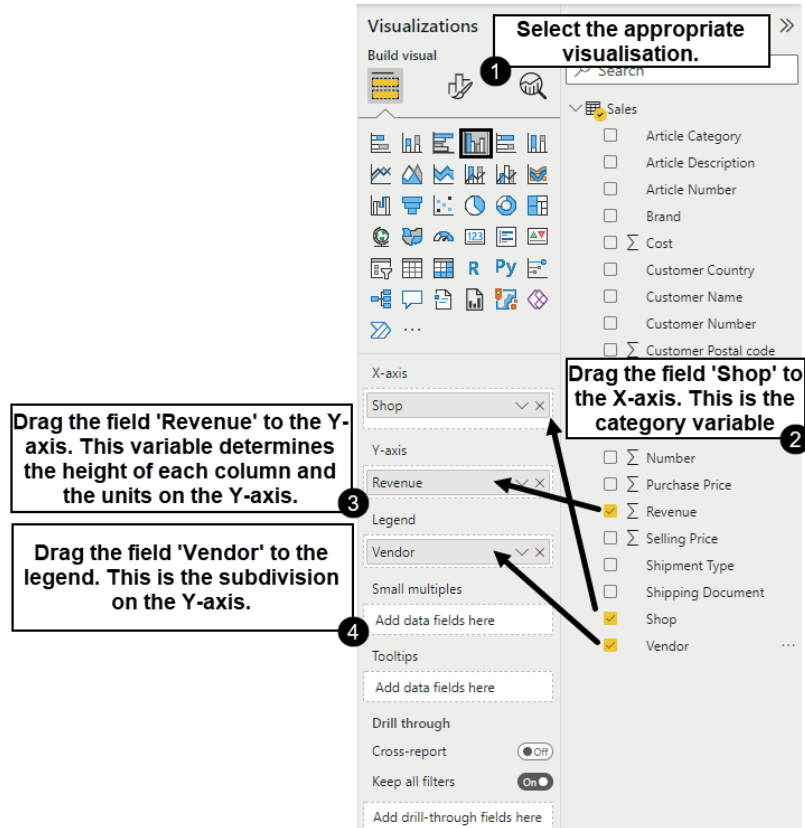
<https://download.larcier-intersentia.com>

or



and enter code: PNT745

The numbering ① ② ③ ... in the text refers to the numbering of the figures so you can follow all actions step by step.



vi

Examples are shown in this way.

Power BI Desktop is continuously developing, and program updates are made regularly. It is possible that print screens in this book might deviate from the version you are working with. When major changes happen, these are published on the website for this package.

We wish you a lot of success and inspiration!

The authors.

TABLE OF CONTENTS

ACKNOWLEDGEMENTS	III
USER GUIDE	V
PART 1	
THE BASICS	1
CHAPTER 1. – WHAT IS PERFORMANCE MANAGEMENT?	3
1. Introduction	5
2. What is performance management?	6
2.1. Mission – vision – objectives	7
2.2. KPIs	8
2.3. Dashboards	8
2.4. Reports	9
2.5. Business intelligence	9
3. A guide for a business intelligence dashboard	10
3.1. Step 1: Objectives	11
3.2. Step 2: KPIs	12
3.3. Step 3: Data availability	13
3.4. Step 4: ETL	13
3.5. Step 5: Calculations and analyses	14
3.6. Step 6: Reports per functional area	14
3.7. Step 7: creation of a dashboard	15
3.8. Step 8: Interpretation and adjustments	15
4. What Is Power Bi?	15
4.1. Magic quadrant for BI and analytical platforms	16
4.2. Advantages and disadvantages of Power BI Desktop	17
4.3. Power BI Desktop versus Excel BI (Power Pivot/Power Query in Excel)	17
4.4. Core working of Power BI	18
4.5. Let's start with Power BI Desktop	19
5. Conclusion	21
CHAPTER 2. – HOW DO YOU CREATE A SIMPLE DASHBOARD?	23
1. Introduction	25
1.1. Case study	25

1.2.	Data import	27
1.3.	Default view	29
1.4.	Save a Power BI file	30
2.	Possible visualizations	30
2.1.	General information	30
2.2.	Clustered bar or column chart	32
2.3.	(100%) Stacked bar or column chart	34
2.4.	Line or area chart	37
2.5.	Pie or donut chart	38
2.6.	Tree map	40
2.7.	Basic map	42
2.8.	Table versus matrix	45
2.9.	Card	47
3.	Format a report	48
3.1.	Format a visualization	48
3.2.	Format a report	52
3.2.1	Apply wallpaper	52
3.2.2	Apply a theme	52
3.2.3	Add elements	52
3.3.	Conditional formatting	53
3.3.1	Colours	53
3.3.2	Conditional formatting in tables and matrices	55
4.	Visualization options	56
4.1.	Start a visualization from another visualization	56
4.2.	Basic options	57
4.3.	Drill down and drill up	60
5.	Add filter or slicer	63
5.1.	Filter in an individual visualization	64
5.2.	Filter on page or report level	65
5.3.	Add a slicer	66
5.4.	Interaction between visualizations	67
5.5.	Edit interactions	68
5.6.	Sync slicers	70
6.	Add a bookmark	70
7.	Conclusion	72
	CHAPTER 3. – HOW DO YOU WORK WITH POWER QUERY?	75
1.	Introduction	77
1.1.	Case study	78
1.2.	Extract	79

2.	Transform: what transformations are necessary?	81
2.1.	Transformation 1: Use the first row as headers	84
2.2.	Transformation 2: Transform text	85
2.3.	Transformation 3: Normalize a query	86
2.4.	Transformation 4: Create a date by adding a suffix	87
2.5.	Transformation 5: Edit column headers	88
2.6.	Transformation 6: Adjust data types	89
2.7.	Transformation 7: Duplicate a query and edit the source file	90
2.8.	Transformation 8: Append queries	91
2.9.	A folder as data source for Power BI	93
2.10.	Transformation 9: Merge queries	96
2.11.	Transformation 10: Organize a query menu	97
3.	Load and create report	99
4.	M Formula Language	100
4.1.	What is M Formula Language?	100
4.2.	An example	101
5.	Conclusion	103
CHAPTER 4. – HOW DO YOU CREATE A DATA MODEL?		105
1.	Introduction	107
2.	What are relationships?	109
2.1.	Which rules apply?	109
2.2.	What is relationship cardinality?	110
2.2.1.	One-to-one relationships	110
2.2.2.	One-to-many and many-to-one relationships	111
2.2.3.	Many-to-many relationships	111
2.3.	What is a cross filter of a relationship?	112
2.4.	How do you create a relationship between two tables?	113
3.	How do you use a date table?	117
3.1.	A static date table	117
3.2.	A dynamic date table	119
4.	Conclusion	120
PART 2		
REPORTS FOR SALES, FINANCE, CUSTOMERS, LOGISTICS AND HR		121
CHAPTER 5. – HOW DO YOU CREATE A SALES REPORT?		125
1.	Introduction	127
1.1.	The case	128
1.2.	Goals and KPIs	128

1.2.1.	Specific: What do you want to show?	129
1.2.2.	Measurable: Is all data available? Are KPIs measurable?	130
1.2.3.	Achievable: What do you want to report?	130
1.2.4.	Realistic: Is it possible to create this report?	130
1.2.5.	Time-based: Which time analyses are useful?	130
2.	ETL	131
2.1.	Extract	131
2.2.	Transform	132
2.2.1.	Use first row as headers	132
2.2.2.	Edit data types	133
2.2.3.	Delete rows	134
2.2.4.	Remove columns	134
2.2.5.	Split columns	135
2.2.6.	Transform text	136
2.3.	Load	137
2.4.	Enter data	137
3.	The data model	138
3.1.	Create relationships	138
3.2.	Add a date table	139
4.	Calculations and analyses	140
4.1.	What is DAX?	140
4.2.	Calculate profit per line using a calculated column	142
4.3.	Calculate total using measure	143
4.4.	Calculate the profit margin	145
4.5.	Compare to last year	145
4.6.	Compare with previous month	147
4.7.	Calculate year-to-date	148
4.8.	Calculate 'rolling 12 months'	149
4.9.	Calculate the difference between current and last year	150
4.10.	Analyze bank holidays	151
4.10.1.	LOOKUPVALUE() function	151
4.10.2.	IF() function	152
4.10.3.	RELATED() function	153
4.10.4.	SUMX() function	153
4.11.	Create a 'measures' table	154
5.	Creating the sales report	155
5.1.	'General' tab	156
5.2.	Profit analyses and geographic analyses	160
5.3.	Scatter analysis	164
5.4.	Detailed analysis for a certain dimension	168
5.5.	Invoice details	175

5.6	Cross-report	176
5.7	Navigation pane	178
6.	Interpretation of the sales report	180
6.1.	General tab	180
6.2.	Profit analysis tab	181
6.3.	Scatter analysis tab	181
6.4.	Vendor detail tab	181
6.5.	Article detail tab	181
6.6.	Invoice detail tab	182
7.	Conclusion	182
CHAPTER 6. – HOW TO CREATE A FINANCIAL MANAGEMENT REPORT?		185
1.	Introduction	187
1.1.	Case study	188
1.2.	Goals and KPIs	189
1.2.1.	Specific: What do you wish to show?	189
1.2.2.	Measurable: Is all data available? Are kpis measurable?	189
1.2.3.	Achievable: Report what you want to report?	190
1.2.4.	Realistic: Is it possible to create this report?	190
1.2.5.	Time-based: Which time analyses are useful?	190
1.3.	Financial management reporting structure	190
1.4.	Budget	196
2.	ETL	198
2.1.	Extract	198
2.2.	Transform	199
2.2.1.	Use first row as field names	199
2.2.2.	Adjustment of data types	201
2.2.3.	Set a column filter	202
2.2.4.	Add index column	203
2.2.5.	Merge Queries	204
2.2.6.	Edit column headers	206
2.2.7.	Normalize a table	207
2.2.8.	Add an edited column	208
2.2.9.	Append queries	209
2.3.	Load	211
3.	The data model	211
3.1.	Create relationships	211
3.2.	Add a date table	213
4.	Calculations and analyses	215
4.1.	Calculate actuals	215

4.2.	Compare to previous year	216
4.3.	Compare with previous month	217
4.4.	Calculate year-to-date	218
4.5.	Calculate difference between actuals and budget	219
4.6.	Create financial KPIs	219
4.7.	Create table with measures	221
5.	Create the financial management report	223
5.1.	KPIs tab	224
5.2.	Profit and loss account	228
5.3.	Create profit-and-loss account	233
5.3.1.	Tab 1: Profit-and-loss account per quarter	234
5.3.2.	Tab 2: Profit-and-loss account per month	235
5.3.3.	Tab 3: Profit-and-loss account in detail	235
6.	Interpretation of financial management report	239
6.1.	Slicer interaction	239
6.2.	KPIs tab	239
6.3.	Profit-and-loss account tab	239
7.	Conclusion	239
	CHAPTER 7. – HOW TO CREATE A CUSTOMER REPORT, LOGISTICS REPORT AND HR REPORT?	243
1.	Introduction	245
2.	Customer report	246
2.1.	Introduction case	246
2.2.	Which KPIs should we take a closer look at?	248
2.3.	ETL	248
2.4.	The data model	249
2.5.	Measures	249
2.5.1.	Measures for promoters, passives and detractors	249
2.5.2.	Measure for general satisfaction percentage	250
2.5.3.	Table with all measures	250
2.6.	Create a report	250
2.7.	Interpretation	252
3.	Logistics report	252
3.1.	Introduction case	252
3.2.	Which KPIs should we take a closer look at?	253
3.3.	ETL	254
3.4.	The data model	254
3.5.	Measures	254
3.5.1.	Measures stock changes	254
3.5.2.	Measures stock	255

3.5.3. Measures for stock-to-sales ratio	255
3.5.4. Table with all measures	256
3.6. Create a report	256
4. HR report	260
4.1. Introduction case	260
4.2. Which KPIs should we take a closer look at?	261
4.3. ETL	261
4.4. The data model	262
4.5. Calculated columns and measures	262
4.5.1. Calculated columns in the 'staff list' table	262
4.5.2. 'Kpis' table	263
4.5.3. Measure amount of employees	263
4.5.4. Measure ambassador score	263
4.5.5. Measure 'number of sick days'	264
4.5.6. Measure vacancies	264
4.6. Create a report	264
4.7. Interpretation	269
5. Conclusion	269
PART 3	
THE CLOUD	271
CHAPTER 8. – POWER BI CLOUD	273
1. Introduction	275
2. How to create a workspace in Power BI cloud?	276
2.1. What is a workspace?	276
2.2. How do you publish a report?	277
2.3. The layout of the workspace	279
2.4. How to create a dashboard?	281
2.5. Layout of the dashboard	283
3. How do you share with an end user?	285
3.1. How do you share a report or a dashboard?	285
3.2. How do you share a workspace?	286
3.3. How do you share an app?	287
3.4. How do you create a user role?	289
3.5. How do you assign a user role?	292
4. How do you embed a Power BI report in sharepoint or a website?	293
5. How do you export a Power BI report to Powerpoint or a .pdf file?	293

6. What is Power BI gateway?	294
6.1. Configuration	295
6.2. Installation	295
7. Analyze in Excel	295
8. Conclusion	297
APPENDIX	299